

# CONTROLLERS



○ Small-Size PLC

○ Motion Controller

○ HMI

○ I/O Module

○ Software



# EASY Series

## Compact PLC

Expandable CAN bus, RS485, RS232, RTC, digital terminal, and analog terminal

Expandable communication,  
Expandable digital/analog terminals,  
RTC

Program download and monitoring;  
EtherNet/IP, Modbus TCP, and Socket  
command

Supports following devices through  
routing: information collection and  
management system, PC, HMI, robot, PLC,  
and other Ethernet devices

EASY module: Five high-speed pulse  
outputs of 200 kHz, four for Easy301

Controls 5/4 servo or step motors

Up to 72 EtherCAT slaves,  
including 32 servo axes

Access of up to 16 local modules,  
eight for Easy301

EtherCAT



RS485, free protocol, MODBUS RTU,  
master/slave mode

Access of the slave through serial  
ports, and access of the HMI,  
instrument, apparatus, and sensor



AutoShop








TCP



EtherNet/IP



Model	Easy301	Easy302	Easy320		EASY502	Easy523
Product appearance						
General specifications					General specifications	
Program data capacity	128 k-step user program; 1 MB user-defined variables, in which 128 KB variables, after No. 1000, are retentive at a power failure and 150 KB variables are soft elements				200 k-step user program; 1 MB user-defined variables, in which 128 KB variables,after No. 1000, are retentive at a power failure and 150 KB variables are soft elements	200 k-step user program; 2 MB user-defined variables, in which 128 KB variables,after No. 1000, are retentive at a power failure and 150 KB variables are soft elements
Ethernet	/	Supports EtherNet/IP,available for models with the firmware version of 5.66.0.0 or later and with the AutoShop version of 4.8.0.0 or later, Modbus TCP, Socket, program upload and download, and firmware upgrade			/	Supports EtherNet/IP,available for models with the firmware version of 5.66.0.0 or later and with the AutoShop version of 4.8.0.0 or later, Modbus TCP, Socket, program upload and download, and firmware upgrade.
Number of axes (pulse + bus)	4	5			16	32
Serial communication	Supports one RS485 channel and one RS232 channel.	Supports up to four channels,one RS485 channel and one RS232 channel supported by the product and two channels supported by the expansion card.	Supports up to three channels,one supported by the product and two supported by the expansion card.		Supports up to three channels ,one supported by the product and two supported by the expansion card.	
CAN communication	/	With the expansion card, one master and up to 63 slaves,available for models with the firmware version of 5.65.2.0 or later and with the AutoShop version of 4.6.5.0 or later,are supported.			With the expansion card, one master and up to 63 slaves, available for models with the firmware version of 5.65.2.0 or later and with the AutoShop version of 4.6.5.0 or later, are supported.	With the expansion card, one master and up to 63 slaves are supported. This is available for models with the firmware version of 5.66.0.0 or later and with the AutoShop version of 4.6.4.0 or later.
EtherCAT communication	Not supported				Supports one channel and up to 72 slaves	
High-speed input	Eight-channel with the frequency of 200 kHz				Eight-channel with the frequency of 200 kHz	
High-speed output	4-axis with the frequency of 200 kHz; PWM pulse width modulation supported	5-axis with the frequency of 200 kHz; PWM pulse width modulation supported			5-axis with the frequency of 200 kHz; PWM pulse width modulation supported	
Expansion module	Supports up to eight local expansion modules.	Supports up to 16 local expansion modules.			Supports up to 16 local expansion modules.	
Expansion card	/	Supports up to two expansion cards.			Supports up to two expansion cards.	
Program language	LD, SFC, FB/FC function (LD), and ST,available for models with the firmware version of 5.67.0.0 or later and AutoShop version of 4.8.1.0 or later.				LD, SFC, FB/FC function (LD), and ST , available for models with the firmware version of 5.67.0.0 or later and AutoShop version of 4.8.1.0 or later.	
Type-C	Supports user program upload and download and firmware upgrade.	Supports user program upload and download and firmware upgrade through the type-C port ,or GE20-TF expansion card.			Supports user program upload and download and firmware upgrade through the type-C port ,or GE20-TF expansion card.	
Instruction speed	20 k-step user program executed in 2 m				20 k-step user program executed in 2 m	20 k-step user program executed in 1.6ms
Other descriptions	Cam, gear, and interpolation not supported	Cam, gear, and interpolation supported			Cam, gear, and interpolation supported	
Power supply specifications					Power supply specifications	
Input power supply rated voltage of the terminal	24 VDC±10%,21.6 VDC to 26.4 VDC.				24 VDC±10% ,21.6 VDC to 26.4 VDC	
Input power supply rated current of the terminal	1 A , maximum value at 24 V voltage.				1 A ,maximum value at 24 V voltage	
24 V input power supply protection	Supports protection against short circuit and reverse wiring				Supports protection against short circuit and reverse wiring	
Input specifications					Input specifications	
Input type and mode	Digital input, sink/source mode				Digital input, sink/source mode	
Number of input channels	8				8	
Voltage upon power-on	≥ 15VDC				≥ 15VDC	
Voltage upon power-off	≤ 5 VDC				≤ 5 VDC	
Software filter time	Low speed: 2 ms to 1000 ms      High speed: 2 us to 1000 us				Low speed: 2 ms to 1000 ms      High speed: 2 us to 1000 us	
Output specifications					Output specifications	
Output type	Transistor NPN output				Transistor NPN output	
Number of output channels	8				8	

## GE20 SERIES EXPANSION CARD

GE20 series expansion cards support nine types, including digital input/output, analog input/output, serial communication, clock, and TF expansion cards. Used together with Easy series compact PLCs, the GE20 can meet specific requirements and save space. At most two GE20 series expansion cards are supported by the Easy series PLC.

### GE20 Model

Product Model	Description	Supported Slot	Certification
GE20-4DO-TN	Supports four sink transistor outputs.	A/B	CE
GE20-4DI	Supports four digital inputs.	A/B	CE
GE20-2AD1DA-V	Supports two analog inputs (current/voltage) and one analog voltage output.	A/B	CE
GE20-2AD1DA-I	Supports two analog inputs (current/voltage) and one analog current output.	A/B	CE
GE20-232/485-RTC	Supports RTC clock and one RS485 or RS232 channel.	B	CE
GE20-232/485	Supports one RS485 or RS232 channel.	A/B	CE
GE20-RTC	Supports RTC clock.	B	CE
GE20-TF	Supports user program and firmware upgrade.	B	CE
GE20-CAN-485	Supports CAN and RS485 communications.	A	CE

### GE20 Appearance

	<b>GE20-4DO-TN</b>	<b>GE20-4DI</b>	<b>GE20-2AD1DA-V</b>	<b>GE20-2AD1DA-I</b>
				
<b>GE20-232/485-RTC</b>	<b>GE20-232/485</b>	<b>GE20-RTC</b>	<b>GE20-TF</b>	<b>GE20-CAN-485</b>
				

## DIGITAL EXPANSION CARD

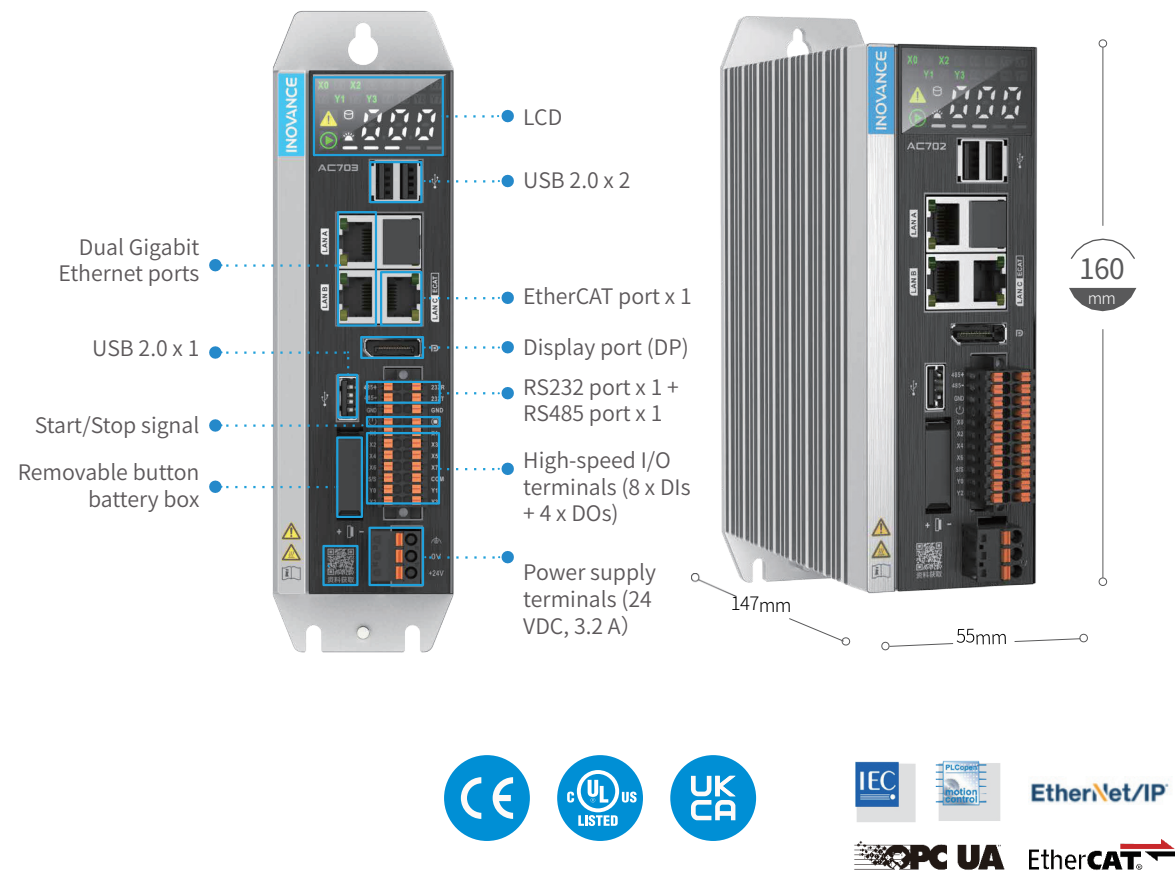
### GE20-4DO-TN & GE20-4DI

Item	GE20-4DO-TN	Item	GE20-4DI
Appearance		Appearance	
Material code	01480033	Material code	01480032
Description	Supports four sink transistor outputs.	Description	Supports four digital inputs.
Supported slot	A/B	Supported slot	A/B
IP rating	IP20	IP rating	IP20
Operating temperature	-20 °C to +55 °C	Operating temperature	-20 °C to +55 °C
Output type	Digital transistor output	Input type	Digital input
Output mode	Sink mode	Input mode	Sink/Source mode
Number of channels	4	Number of channels	4
Output voltage class (resistive load)	24 VDC (20.4 VDC to 26.4 VDC)	Input voltage class	24 VDC ± 10% (21.6 VDC to 26.4 VDC)
Output voltage class (inductive load)	0.5 A/point; 1 A/common terminal	Input current upon power-on	Input current > 3.5 mA
Output voltage class (light load)	6 W/24 VDC (total)	Input current upon power-off	Input current < 1.5 mA
Hardware response time upon power-on/power-off	1 W/24 VDC (total)	Input response time	≈ 15 ms (hardware RC filter time)
Leakage current upon power-off	< 10 uA	Voltage upon power-on	≥ 15 VDC
Switch frequency	Resistive load: 100 Hz; inductive load: 0.5 Hz; light load: 10 Hz	Voltage upon power-off	≤ 5 VDC
Isolation	Photocoupler isolation	Software filter time	Not supported
Protection function	Supports the surge protection device.	Isolation	Photocoupler isolation



# AC700 Series

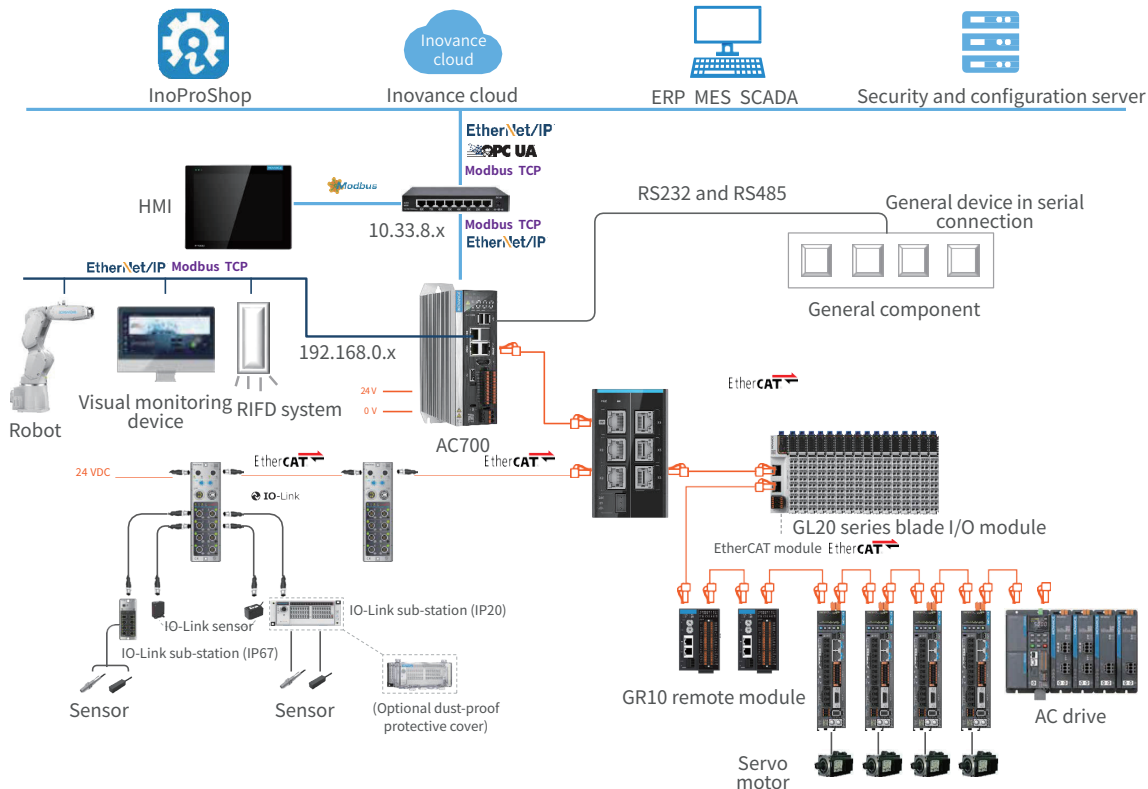
## Book-Sized Intelligent Controller



- Three network ports**  
 EtherCAT port x 1 + Ethernet port x 2; different IP addresses for two Ethernet ports to meet requirements of internal and external network isolation
- Data storage upon a power failure**  
 UPS integrated to store data upon a power failure for cost saving
- Serial port connection**  
 One RS232/RS485 serial port, support Modbus master/slave mode and free protocol
- High-speed I/O terminal of 200 kHz**  
 DI x 8 (4 for encoder counting) and DO x 4 (2 for PWM output) to reduce wiring
- Real-time information displayed on the high-definition LCD**  
 Check DI/DO status, running fault code, PLC running/faulty status, data read/write status, and current CPU load rate
- PLC start/stop by external input signal**  
 Start or stop the PLC by external input signal without software

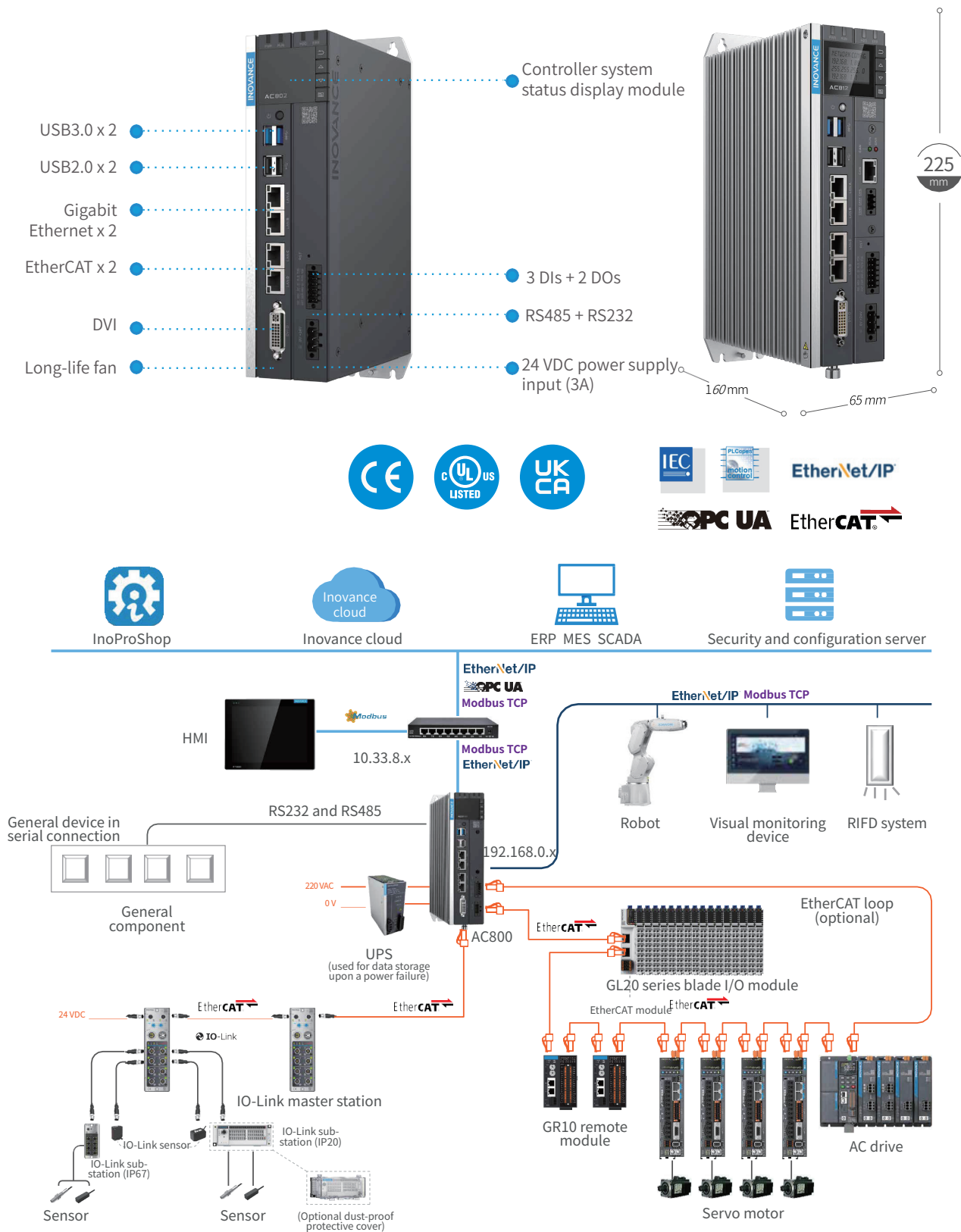
## SPECIFICATIONS

Model	AC702	AC703
Basic information		
Processor	Intel Celeron	
Operating system	Linux	
Programming mode	IEC 61131-3 programming language (LD, ST, SFC, CFC)	
Dimension (H x W x D)	160 mm x 55 mm x147 mm	
Memory		
Memory	128 MB	
Memory for data storage upon a power failure	5MB; data storage upon a power failure supported and no external UPS required	
Memory capacity	4 GB, DDR3L, interface speed of 1600 MT/s	
Hardware capacity	64 GB SSD	
Bit memory	5 MB	
CPU performance		
Bit/Word instruction execution time	Basic LD contact: 4.6 ns; four operations: 4.7 ns	
Number of motion axes	16	32
I/O		
DI	Eight high-speed DIs; 200 kHz; four DIs for encoder counting ,single-ended input supported and differential input not supported	
DO	Four high-speed DOs; 200 kHz; two PWM outputs supporting sink mode	
Number of EtherCAT slaves	128 (single channel)	128 (single channel)
Communication configuration		
RS232/RS485	RS232 channel x 1, RS485 channel x 1 (supports up to 31 slaves); isolation	
Ethernet (LAN A/LAN B)	1 Gbps; supports TCP/IP, UDP, OPC UA, Socket, Modbus TCP ,up to 64 slaves supported, and EtherNet/IP ,64 clients and 32 servers supported; can be used as the master and slave simultaneously	
EtherCAT (100 Mbps)	EtherCAT channel x 1 (LAN C)	
USB	USB 2.0 x 3	



# AC800 Series

## High-Performance Intelligent Controller



## PRODUCT FEATURES

- Built-in Intel Core i7, Core i5, Celeron and other series x86 high-performance processors
- Support six PLCopen programming languages.
- Including PLCopen+CAM+CNC+ROBOT motion control components.
- Dual EtherCAT master networks; 32 axes supported at the EtherCAT cycle of 500 us; 256 axes supported at the EtherCAT cycle of 4 ms
- EtherCAT bus I/O module supported to provide high-speed I/O terminals, ordinary DI/DO terminals, and up to 32,000 points.
- Supports EtherNet/IP, OPC UA, Modbus TCP and other communication protocols to facilitate the construction of multi-level networks.
- Built-in Modbus RTU master/slave protocol; two independent RS485 and RS232 communication ports to work with traditional equipment.

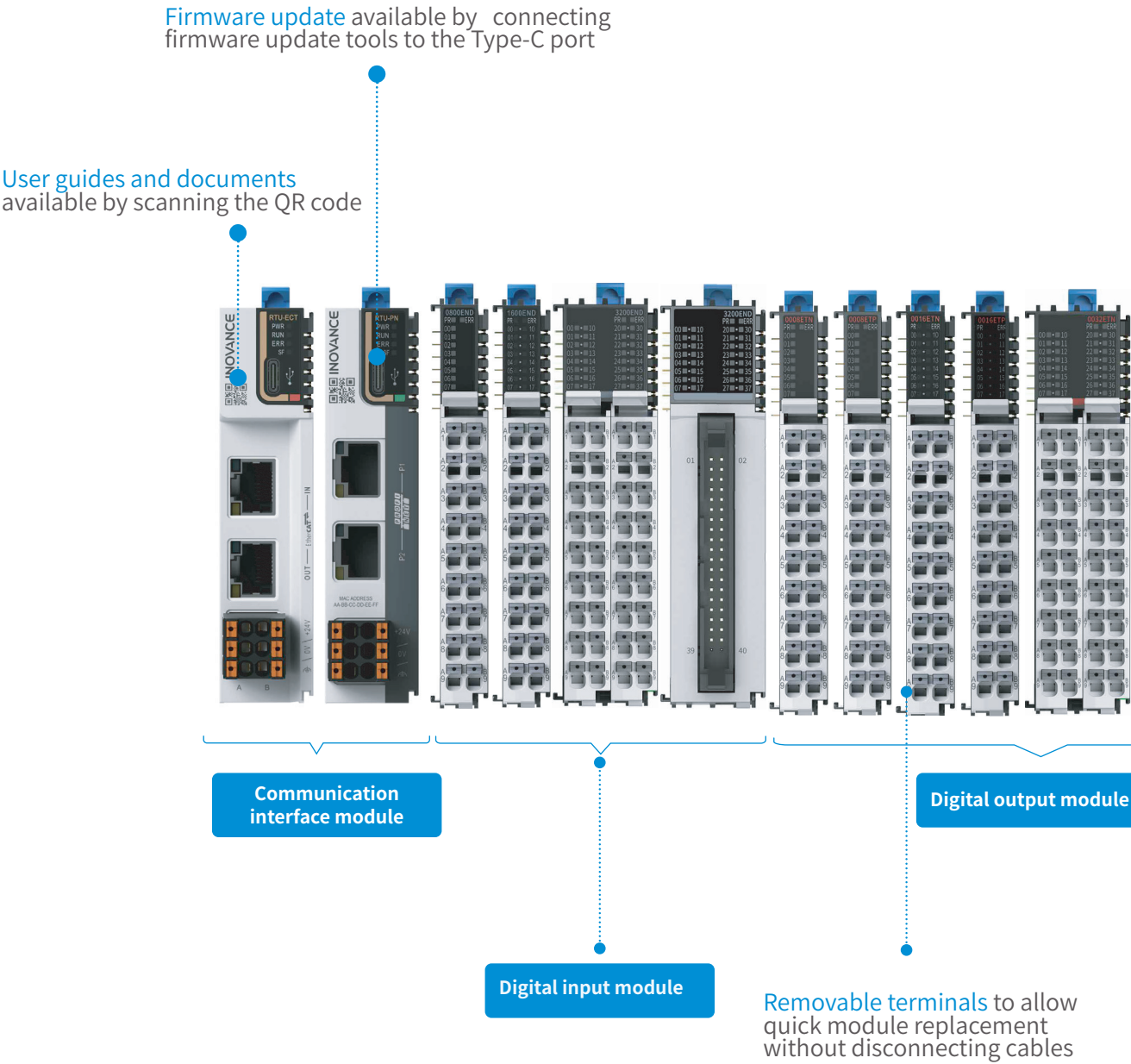
## SPECIFICATIONS

Item	AC812	AC810	AC802	AC801
Processor	Intel i7, 2.7 GHz	Intel i5, 2.5 GHz	Intel Celeron, 1.6 GHz	Intel Celeron, 1.6 GHz
Memory	DDR4-4G	DDR4-4G	DDR4-4G	DDR4-4G
Hardware	SSD 128 GB	SSD 128 GB	SSD 128 GB	SSD 64 GB
Display and interface	Reserved DVI-D Built-in dot-matrix system status display module; supports dot matrix of 128 x 64 and 4 keys			
LAN Ethernet	LAN x 2; supports Modbus TCP, UDP, and OPC UA			
EtherCAT bus	EtherCAT master x 2	EtherCAT master x 2	EtherCAT master x 2	EtherCAT master x 1
Number of axes	128 + 128	128 + 128	64 + 64	48 (32 axes supported simultaneously in 1 ms)
USB port	USB2.0 x 2; USB3.0 x 2			
Serial communication	RS485 x 1; RS232 x 1			
DI	Three DI for signal input of specific functions			
DO	Two DOs for signal output of system status indications			
Number of long-life fans	2	2	/	/
User program memory	128 MB	128 MB	128 MB	128 MB
User data memory	128 MB	128 MB	128 MB	128 MB
Memory for data storage upon a power failure	5 MB (UPS required)	5 MB (UPS required)	5 MB (UPS required)	5 MB (UPS required)

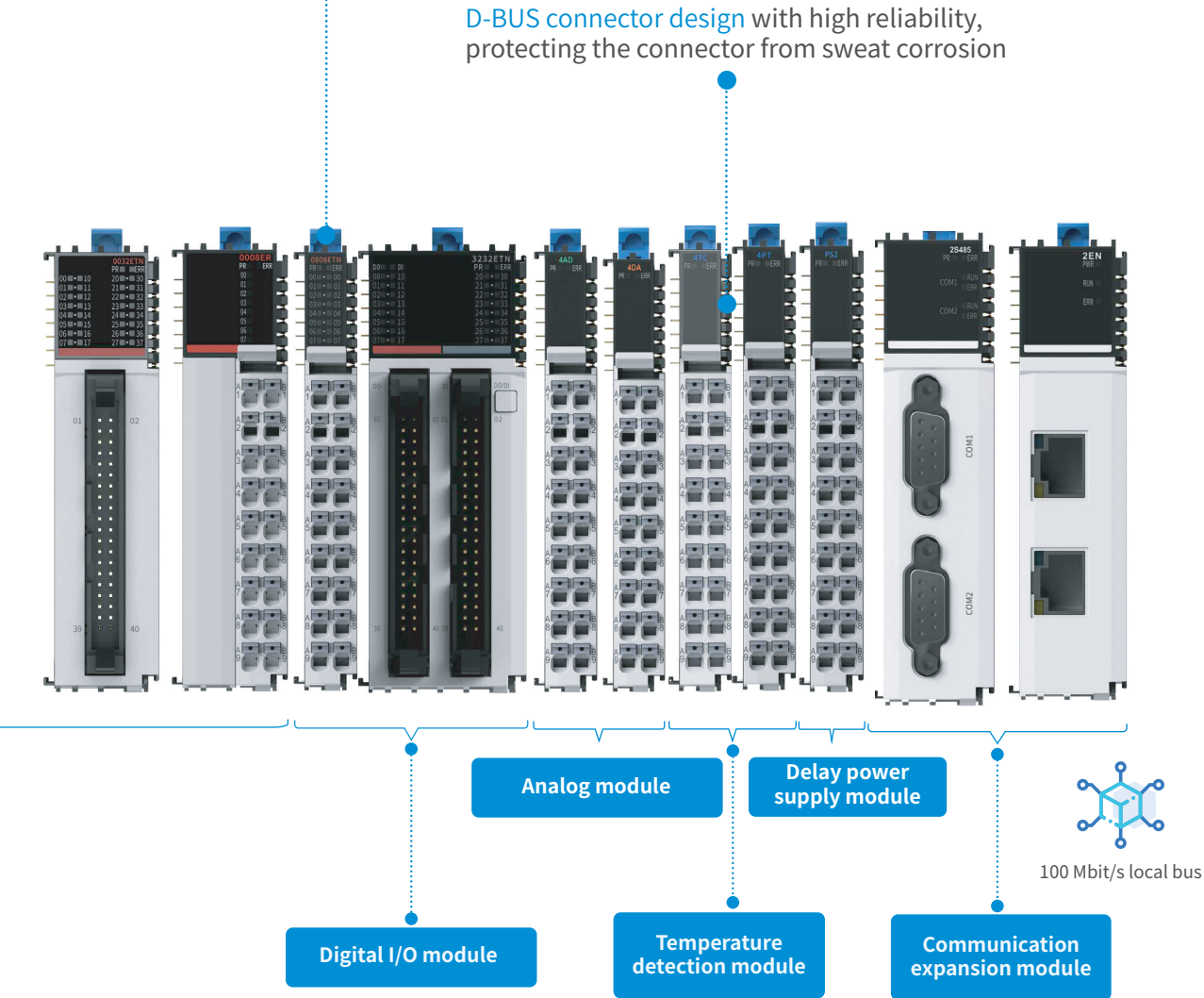


# GL20 Series I/O Module

Powerful, Stable, and Efficient Distributed I/O System



Independent status diagnosis and LED indicators;  
Colored letters for quick identification of I/O functions;  
Clear codes for easy wiring



Colored coding for modules

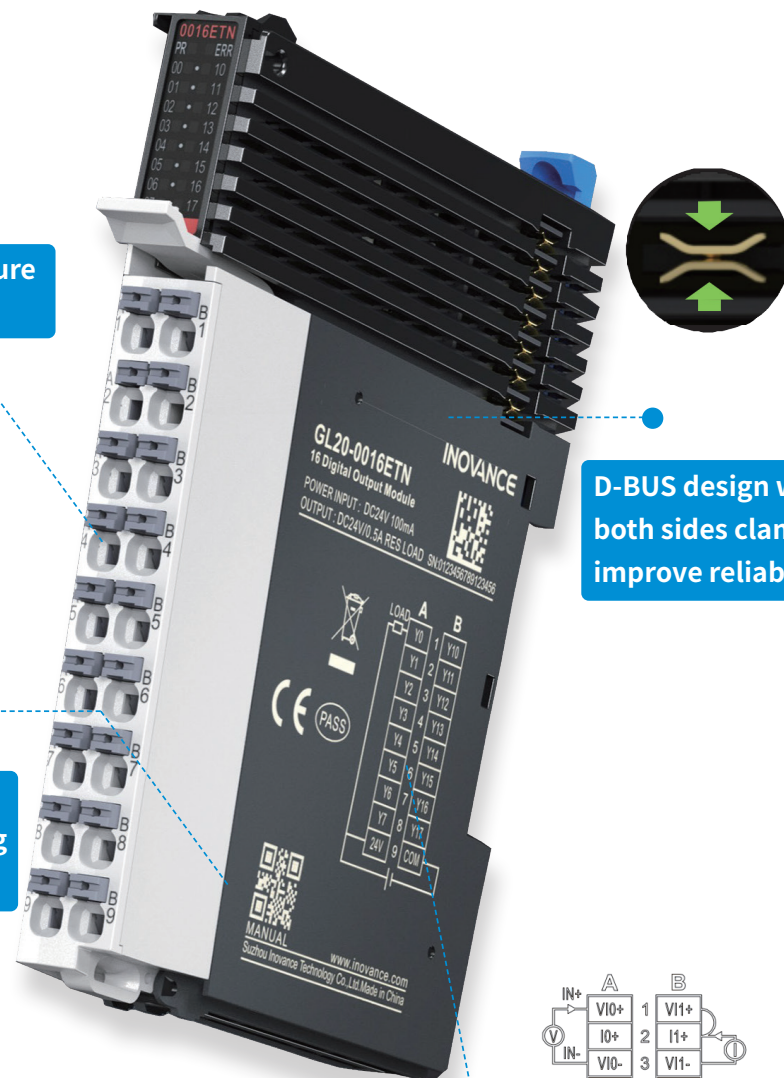
- DO
- AO
- DI
- AI
- Communication
- Others

## RELIABLE STRUCTURE

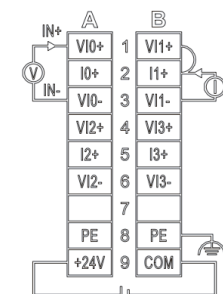
Design lifetime up to ten years to guard long-term stable operation of the product

Terminals with large aperture to allow forcible wiring

Related documents available through scanning the QR code

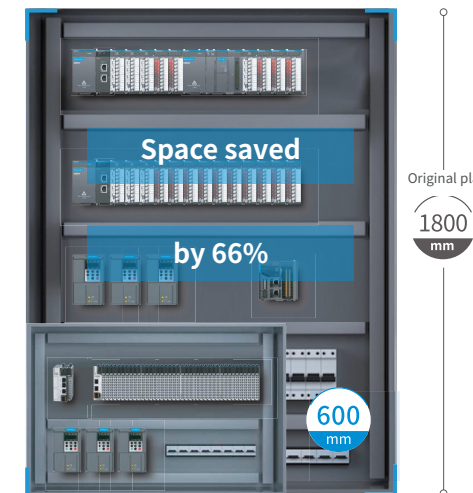


D-BUS design with both sides clamped to improve reliability

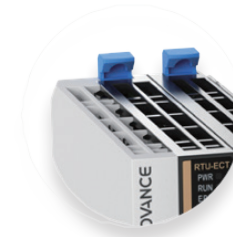


Wiring diagram printed on the module

## COMPACT DESIGN AND SCREW-FREE WIRING



Thickness reduced to 12 mm 2/3 cabinet space saved Space utilization maximized



Groove-type mounting terminals to allow tool-free installation



Push-in terminals to allow easy wiring with a gentle push

Terminals with large aperture, 1.5 mm<sup>3</sup> cable, to support forcible wiring

## FLEXIBLE SYSTEM INTEGRATION

AC700

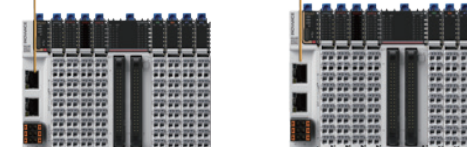


Easy+GL20

EASY series PLC can be coupled with GL 20 modules directly



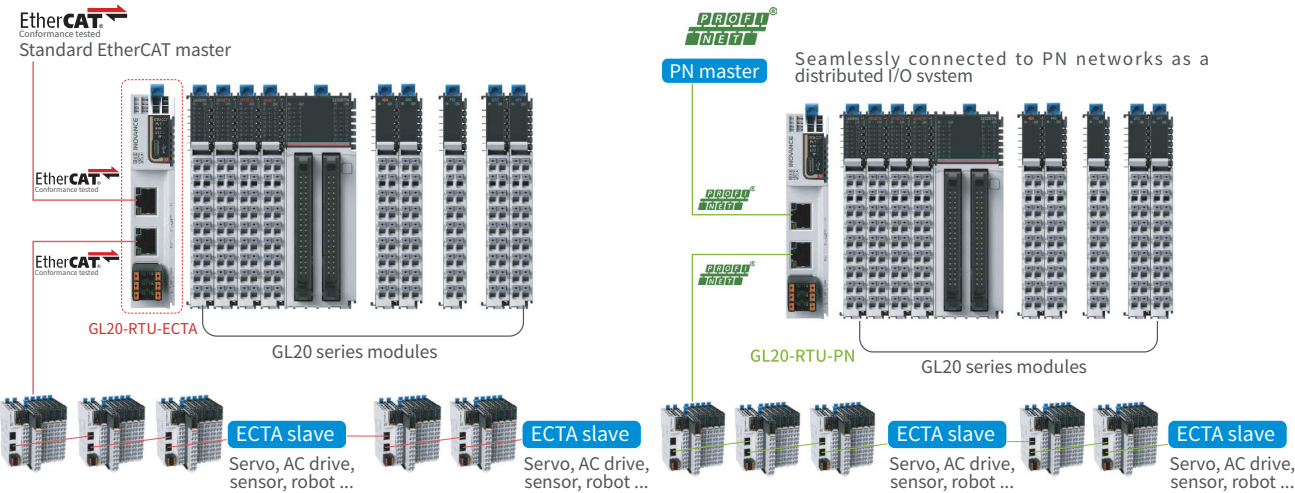
GL20 series modules





SYSTEM TOPOLOGY

The GL20 series modules can be directly coupled with the Easy series PLCs, or connected to the standard EtherCAT master through the EtherCAT coupler module. Suitable master includes AC series, AM series, Easy500 series, H5U series, PAC series, MTC series of Inovance, as well as any standard EtherCAT masters of other vendors. The GL20 series modules can also be connected to the PN network as a distributed I/O system through the PROFINET coupler module.



EtherCAT Coupler Specifications	
Model	GL20-RTU-ECT
IP rating	IP20
Certification	CE
Rated terminal input voltage	24 VDC (20.4 VDC to 28.8 VDC)
Rated terminal input current	0.6 A (typical@24 V)
Rated bus output voltage	5 VDC (4.75 VDC to 5.25 VDC)
Rated bus output current	2A (typical@5 V)
Power supply protection	Overcurrent protection, anti-reverse connection protection, surge absorption
Ambient operating temperature	-20° C to 55° C
Ambient operating humidity	< 95%RH, without condensation
Atmosphere	No corrosive gas
Ambient storage temperature	-20° C to 60° C ( < 90%RH, without condensation)
Altitude	≤ 2000 m (80 kPa)
Pollution degree	2 or less
Immunity	2 kV on power supply line (Conforms to IEC 61000-4-4)
Overvoltage category	II
EMC immunity level	Zone B, IEC61131-2
Vibration resistance	IEC 60068-2-6
Shock resistance	IEC 60068-2-27
Minimum communication cycle	125 us
Scalability	16 modules supported

PROFINET Coupler Specifications	
Model	GL20-RTU-PN
IP rating	IP20
Certification	CE
Rated terminal input voltage	24 VDC (20.4 VDC to 28.8 VDC)
Rated terminal input current	0.6 A (typical@24 V)
Rated bus output voltage	5 VDC (4.75 VDC to 5.25 VDC)
Rated bus output current	2A (typical@5 V)
Power supply protection	Overcurrent protection, anti-reverse connection protection, surge absorption
Ambient operating temperature	-20° C to 55° C
Ambient operating humidity	< 95%RH, without condensation
Atmosphere	No corrosive gas
Ambient storage temperature	-20° C to 60° C ( < 90%RH, without condensation)
Altitude	≤ 2000 m (80 kPa)
Pollution degree	2 or less
Immunity	2 kV on power supply line (Conforms to IEC 61000-4-4)
Overvoltage category	II
EMC immunity level	Zone B, IEC61131-2
Vibration resistance	IEC 60068-2-6
Shock resistance	IEC 60068-2-27
Minimum communication cycle	1 ms
Scalability	16 modules supported

ORDER INFORMATION

Model	Description	Terminal Type
GL20 series blade I/Os can be expanded through the RTU-ECT module.		
GL20-RTU-ECT	EtherCAT communication interface module, supports any devices under EtherCAT master	Plug-in
GL20-RTU-PN	PROFINET communication interface module, supports any devices under PROFINET master	Plug-in
GL20-1600END	16-channel digital input module	Plug-in
GL20-0016ETN	16-channel digital output module (NPN)	Plug-in
GL20-0016ETP	16-channel digital output module (PNP)	Plug-in
GL20-0808ETN	8-channel input 8-channel output module (NPN)	Plug-in
GL20-0008ETN	8-channel digital output module (NPN)	Plug-in
GL20-0008ETP	8-channel digital output module (PNP)	Plug-in
GL20-0800END	8-channel digital input module	Plug-in
GL20-0008ER	8-channel relay output module	Plug-in
GL20-4AD	4-channel analog input module	Plug-in
GL20-4DA	4-channel analog output module	Plug-in
GL20-4PT	4-channel thermal resistor input temperature detection module	Plug-in
GL20-4TC	4-channel thermocouple input temperature detection module	Plug-in
GL20-0032ETN*	32-channel digital output module (NPN, push-in design)	Plug-in
GL20-3200END*	32-channel digital input module (push-in terminal)	Plug-in
GL20-0032ETN-M	32-channel digital output module (NPN, one set of MIL connector and connecting cable required)	Plug-in
GL20-3200END-M	32-channel digital input module (one set of MIL connector and connecting cable required)	Plug-in
GL20-3232ETN-M	32-channel digital output module (NPN, two sets of MIL connector and connecting cable required)	
GL20-PS2*	Relay power module (one PS2 module can power additional 16 expansion modules)	Plug-in
GL20-2S485*	2-channel RS485 communication expansion module (DB9 interface)	Plug-in
GL20-2EN*	Ethernet module (IP expansion)	Plug-in
GL20-2SSI*	2-channel SSI encoder module	Plug-in
GL20-2COM*	2-channel COM module (support for 2 x RS232 / 2 x RS485 / 1 x RS422, push-in design)	Plug-in
* Please contact Inovance for the launch time of this product.		
GL20 Accessories		
Terminal block	Works with GL20-0032ETN-M/GL20-3200END-M/GL20-3232ETN-M	Cross screw
Terminal block cable	Works with GL20-0032ETN-M/GL20-3200END-M/GL20-3232ETN-M, cable length 0.5 m	-
Terminal block cable	Works with GL20-0032ETN-M/GL20-3200END-M/GL20-3232ETN-M, cable length 2 m	-

# IT7000 Series

## High-Performance HMI

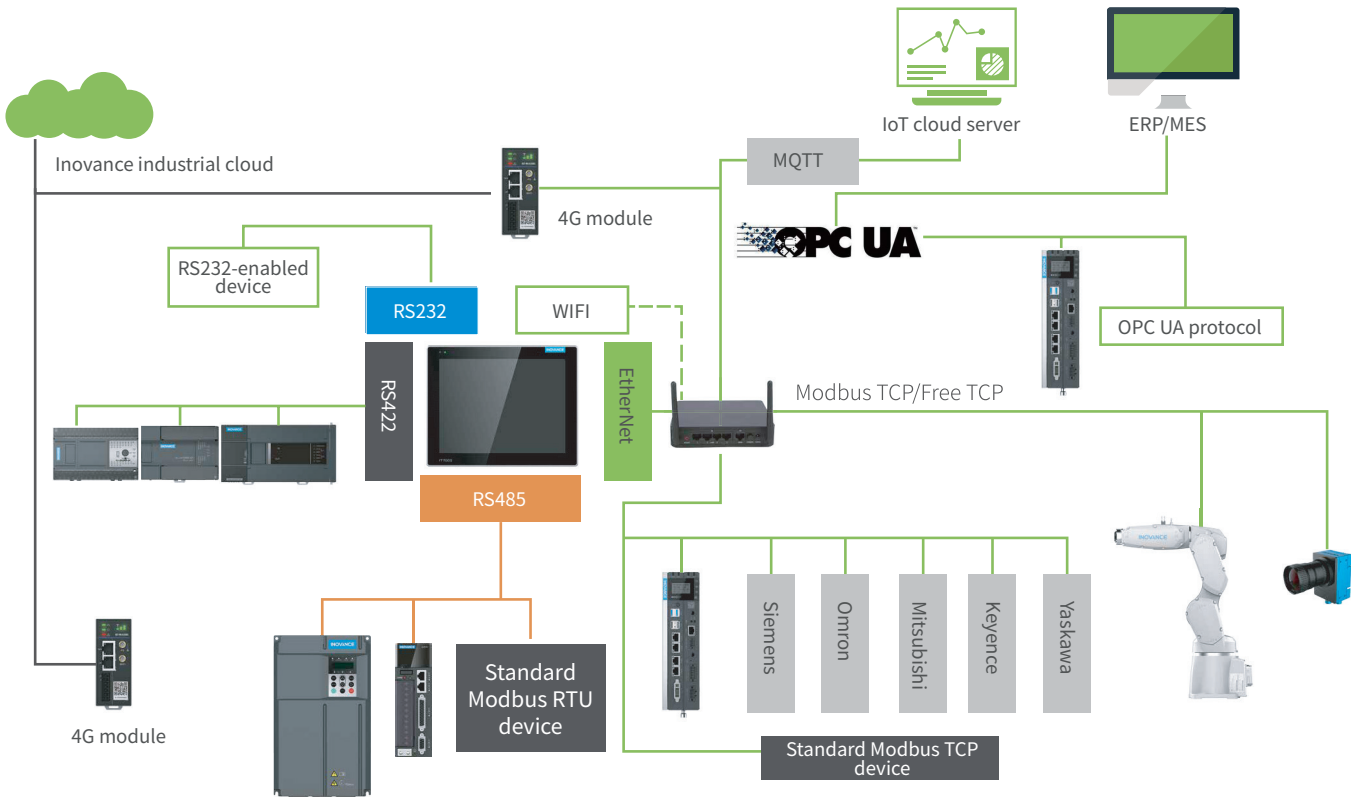


## HARDWARE CONFIGURATION

Model	IT7070E	IT7070T	IT7070S	IT7100E	IT7100S	IT7150E
Display size	7.0"			10.1"		15.0"
Resolution	800*480			1024*600		1024*768
Dimensions L*W*D (mm)	200*146*35			271*213*36		367.8*294.8*53
CPU	Cortex A8 600MHz			Cortex A8 1GHz		Cortex A8 1GHz
RTC	✓	✓	✓	✓	✓	✓
DRAM	128 MB			256 MB DDR3	128 MB DDR3	256 MB DDR3
Flash memory	128 MB			256 MB	128 MB	256 MB
Brightness (cd/㎡)	350			350		300
Display color	24-bit true color			24-bit true color		24-bit true color
Backlight	LED			LED		LED
Backlight service life	35,000 hrs			30,000 hrs		50,000 hrs
SD card slot	✓	×	×	✓	×	✓
USB port	1 x USB 2.0					
USB download port	1 x Mini USB					
Ethernet port	✓	×	×	✓	✓	✓
Serial port	COM1 (RS422/RS485) COM2 (RS232) COM3 (RS485)	COM1 (RS422/RS485) COM2 (RS232)	COM1 (RS422/RS485)	COM1 (RS422/RS485) COM2 (RS232) COM3 (RS485)	COM1 (RS422/RS485)	COM1 (RS422/RS485) COM2 (RS232) COM3 (RS485)
IP rating	Front panel IP65, rear cover IP20			Front panel IP65, rear cover IP20		Front panel IP65, rear cover IP20

- Highly expandable, meet the customized control needs in different industries with APIs
- Support single-unit and multi-unit network communication through serial port, Ethernet, and WIFI
- Support mainstream PLCs, AC drives, and servo communication protocols from Inovance and other manufacturers, as well as standard Modbus and ModbusTCP protocols
- Support VNC, project HMI anytime, anywhere on mobile devices
- Industrial-grade manufacturing process
- Built-in InoTouchPad configuration software, ensure flexible configuration functions and ease of use
- Rich gallery resources and customizable interface style settings, perfect for creating your own user interface

## FLEXIBLE NETWORKING SOLUTIONS



Protocol	INOVANCE products
Modbus	Standard Modbus device
OPC UA	Supports OPC UA Client; Server not supported
MQTT	Supports standard MQTT protocol
Free protocol	Supports connection between Inovance PLCs (H1U/H2U/H3U/H5U) and other third-party devices that support the free protocol, can serve as Master or Slave



# AM300/500 Series

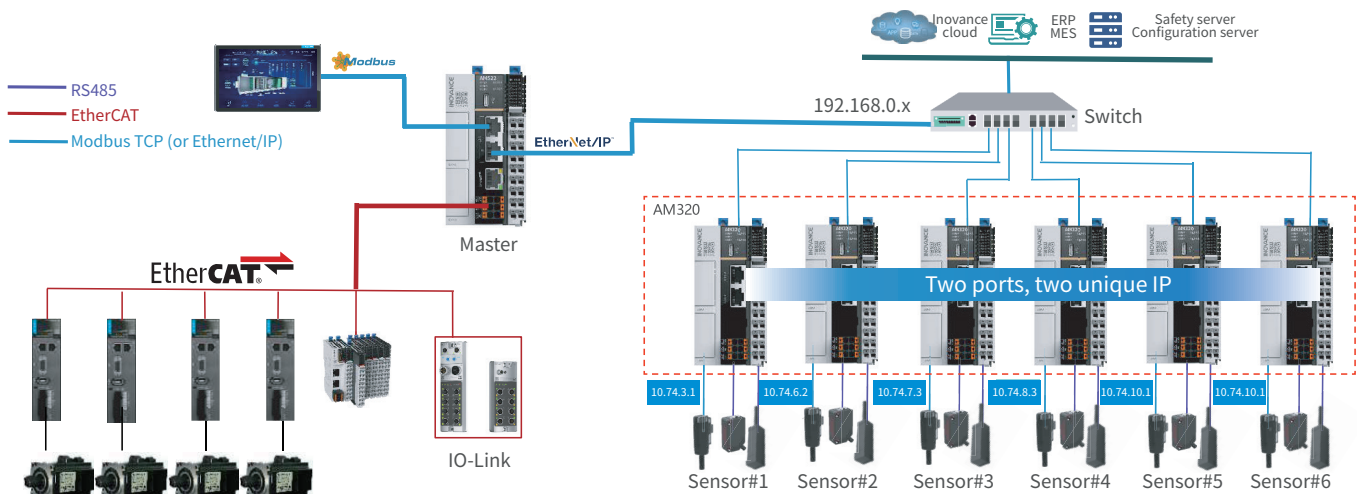
## Motion Controller



COMING SOON...

## PRODUCT CONFIGURATION

			AM500 Series (With EtherCAT motion control)		AM300 Series (Without EtherCAT motion control)
CPU			AM521	AM522	AM320
Input power			24 VDC±10%, 1A, short-circuit / reverse connection protection		
I/O			8-input (source/sink), 8-output (sink)		
Data/program storage capacity			10 MB for program, 20 MB for data (512 KB retentive memory)		
Instruction processing speed	Bit processing instruction		0.143 μs		
	Word processing instruction		0.416 μs		
Communication specifications	RJ45	EtherNet	2 x Ethernet (built-in switch)		2 x Ethernet (2 independent IP addresses)
		EtherCAT	1 x EtherCAT		Not supported
	Number of serial ports		3 x RS485 (1 built-in RS485 port, 2 RS485 ports offered via expansion card)		
	CAN communication		Support for expansion of one communication channel via expansion card (max. 63 slaves)		
EtherCATbus specifications	Number of EtherCAT axes		8	16	Not supported
	Number of EtherCAT slaves		Max. 127 EtherCAT slaves		
	Typical communication cycle		1 ms for synchronization of 4 axes		
Local pulse axis			4 x pulse axes		
Local encoder axis			8 x encoder axes, supports single-phase CW/CCW		
Scalability	Expansion module		Supports local expansion of full range of GL20 series modules (max. 16), and remote expansion of IO-Link and GL10-GR10 series modules		
	Expansion card		Supports expansion of GE20 series modules (COM/CAN, digital, analog, TF card, RTC card) via two card slots		
Other interfaces			Type-C (power supply to PLC, upload and download of program)		
Configuration software			InoProShop (conforms to IEC 61131-3)		



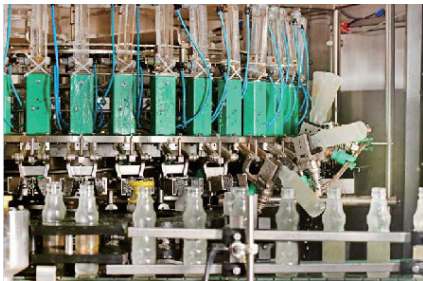
## INDUSTRY APPLICATIONS



Packaging: Sanitary products



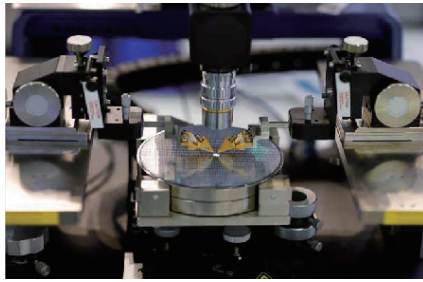
Printing: Flexographic & Gravure printing



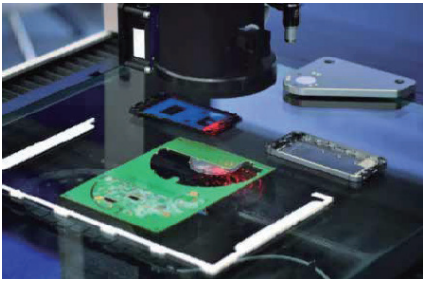
Food & Beverage: Filling & Capping



Warehousing: Palletizing



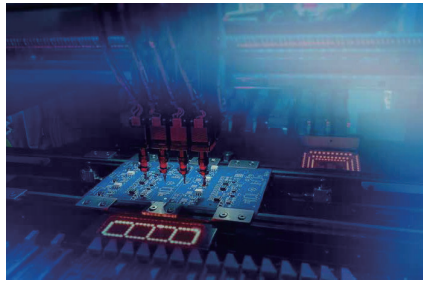
Semiconductor silicon wafer: CVD



Mobile phone: Labeling



Medical: Filling machine



SMT



Sewage treatment



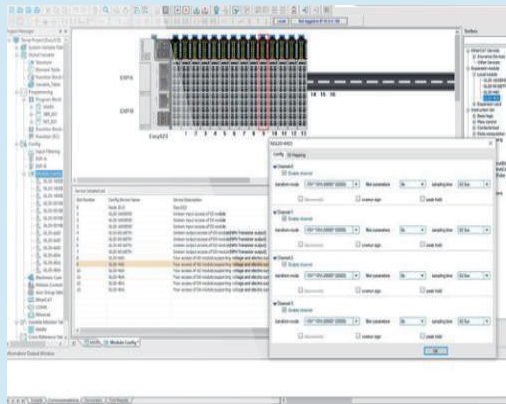
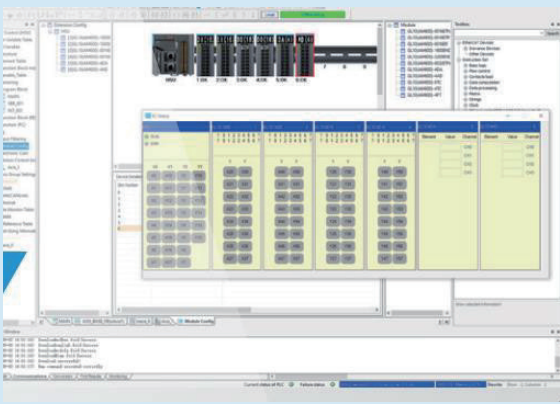
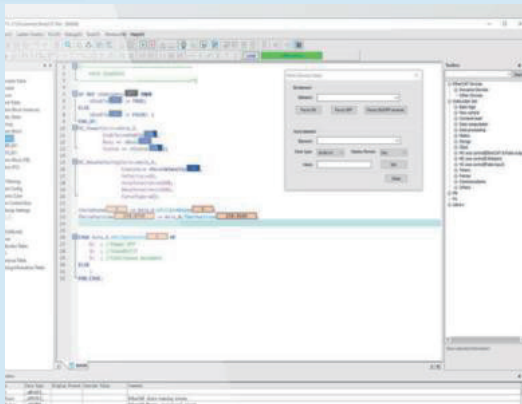
# SOFTWARE

For INOVANCE Controllers



AutoShop

For HXU/Easy Series small-sized PLCs



EtherNet/IP™  
EtherCAT®

Non-standard

Simulation with HMI (H5U, Easy)

Within 32 axes

EtherNet/IP  
Up to 72 EtherCAT slaves, including 32 axes

EC-61131 & PLC Open

Simulation & Debugging

Performance

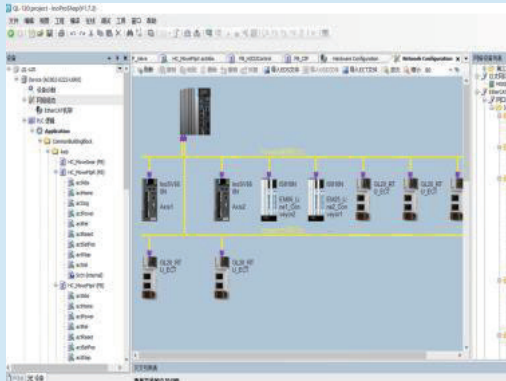
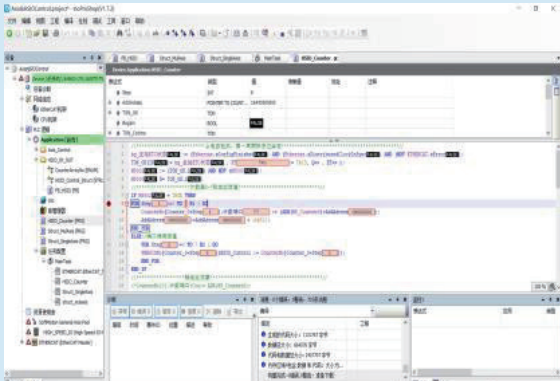
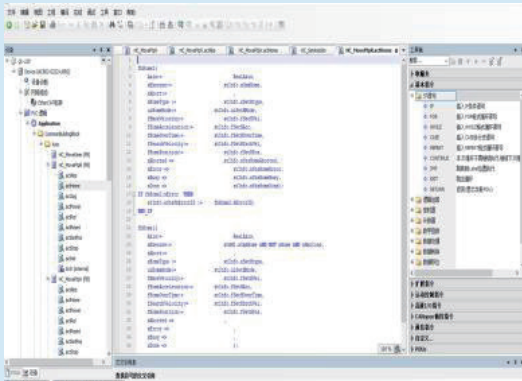
Communication & Motion Control

Standard

Breakpoint debugging

Within 256 axes

EtherNet/IP & OPC UA  
Up to 256 EtherCAT slaves



OPC UA  
EtherNet/IP™  
EtherCAT®



InoProShop

For INOVANCE AM Series medium-sized PLCs & AC Series intelligent controllers